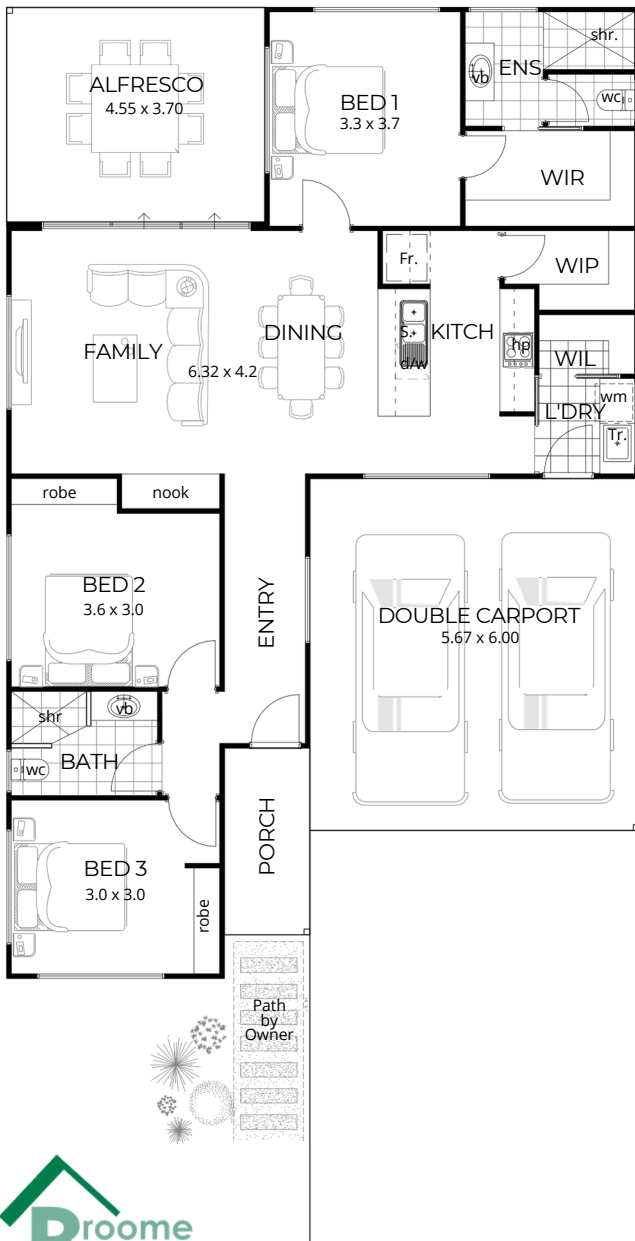




*Artist's Impression - Some Optional Extras may be shown



THE CARBADA



- Residence 110.92m²
- Carport 34.47m²
- Alfresco 16.83m²
- Porch 4.75m²

TOTAL 166.97m²

Open-concept living and dining area

Modern kitchen featuring a breakfast bar, spacious walk-in pantry with direct access from carport through the laundry, creating a convenient and functional hub

Living space seamlessly flows onto large Alfresco, enhancing the overall living area

Contemporary nook integrated within the central area of the home

Master retreat positioned at rear with large ensuite and walk-in-robe



See Builder's Turn Key Inclusions to follow

broomebuilders.com



INCLUSIONS

- High rating energy efficient designs
- Builders indemnity insurance
- 6 month maintenance period
- Construction Drawings, Engineers Certification & Building Permit
- Architectural, Structural engineers & licenses
- Site Works
- Plumbing & electrical connections
- Termite treatment with a 50 year guarantee
- Engineered concrete slab
- 2 Pack epoxy steel below ground level
- Cyclonic steel wall frames
- H2 treated timber cyclonic trusses
- Custom orb wall and roof sheeting
- Anticon insulation to roof, R3 Batts to ceilings & R1.5 Batts to external walls
- Custom orb soffits to Carport, Porch and Alfresco
- Grey Concrete to Porch, Carport and Alfresco
- 250ltr Rinnai Enviroflo Heat Pump
- Trend Noosa or Elite TX Flooring
- Complete internal and external painting
- Generous cupboard and storage throughout
- Polytec range of doors and bench tops
- Clipsal LED Lighting through out
- Zanda internal and external door furniture
- Westinghouse stainless steel electrical appliances
- Quality porcelain bathroom fixtures and fittings
- Tiling to wet areas, to Broome Builders standards
- TV Antenna with 2 Tv points to each
- NBN connection with 2 data points
- Installation of clothesline and reticulation point

Plus much much more...